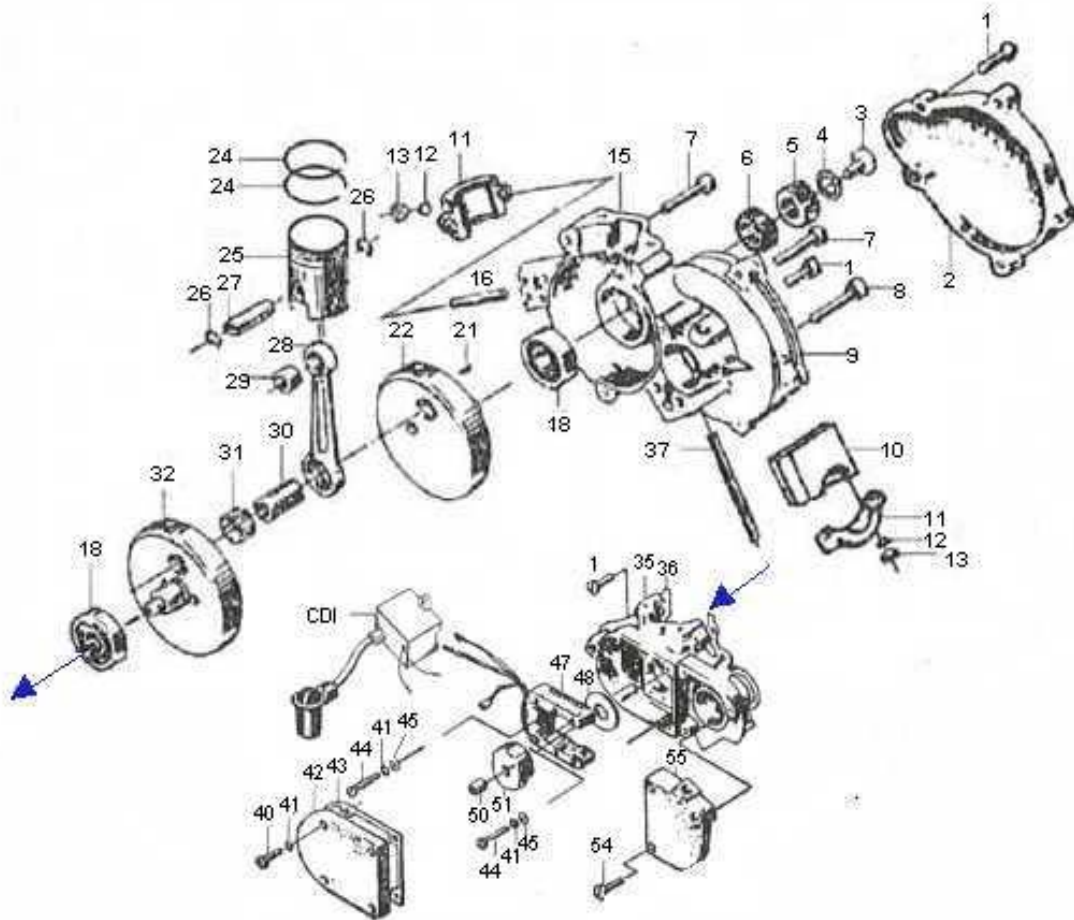


Crank & Piston



- | | | |
|----------------------------|------------------------------|------------------------------|
| 1) 54M6X25 | 16) M6X40 Stud | 38,15) L and Rt Crank Case |
| 2) Gear Box Cover | 18) Crank Shaft Ball Bearing | 39) Crank Case Gasket |
| 3) Bevel Gear Bolt | 21) Semi-circular Carter | 40) M4X18 Rnd Head Bolt |
| 4) Lock Washer | 22,32) L. and R. Fly Wheel | 41) M4 Lock Washer |
| 5) Small Bevel Gear | 24) Piston Ring | 42) Magneto Cover |
| 6) Thick Rbr Bearing Seal | 25) Piston | 43) Magneto Cover Gasket |
| 7) M6X35 Rnd Head Bolt | 26) Piston Pin Snap Ring | 44) M4X25 Rnd Head Bolt |
| 8) M6X35 Rnd Head Bolt | 27) Piston Pin | 45) M4 Flat Washer |
| 9) Gear Box Gasket | 28) Connecting Rod | 47) Magneto Winding / Stator |
| 10) Long Bracket Support | 29) Piston Pin Bushing | 48) Thin Rbr Bearing Seal |
| 11) Mounting Bracket | 30) Crank Pin | 50) M8 Nut |
| 12) M6 Lock Washer | 31) Needle Bearing | 51) Magneto Magnet |
| 13) M6 Nut | 32,22) L. and R. Fly Wheel | 54) M6X35 Rnd Head Bolt |
| 15,38) L and Rt Crank Case | 37) M6X70 Stud | 55) Drive Sprocket Cover |
| | | 56) CDI |